

Kurzweil 3000[®] for Macintosh
Web License Guide
Version 20

Revised August 8, 2020

Kurzweil 3000® for Macintosh® Web License Edition

© by Kurzweil Education, a Cambium Learning Company. Kurzweil Education is a registered trademark of, and Kurzweil 3000, License-to-Go, and KESI Virtual Printer are trademarks of Kurzweil Education, Inc.

Macintosh is a registered trademark of Apple in the United States and/or other countries.

Other product or brand names are trademarks or registered trademarks of their respective holders.

Component Acknowledgments:

The American Heritage® Dictionary of the English Language, Fifth Edition. Copyright © 2011 by Houghton Mifflin Harcourt Company. Published by the Houghton Mifflin Harcourt Company. No part of this database may be reproduced or otherwise used without prior written permission from the publisher unless such use is expressly permitted by applicable law.

Words are included in this Dictionary on the basis of their usage. Words that are known to have current trademark registration are shown with an initial capital and are also identified as trademarks. No investigation has been made of common-law trademark rights in any word. The inclusion of any word in this dictionary is not, however, an expression of the Publisher's opinion as to whether or not it is subject to proprietary rights, nor is it to be regarded as affecting the validity of any trademark.

The American Heritage® Children's Dictionary by the Editors of the American Heritage® Dictionaries. Copyright © 2009 by Houghton Mifflin Harcourt Company. Published by the Houghton Mifflin Company. No part of this database may be reproduced or otherwise used without prior written permission from the publisher unless such use is expressly permitted by applicable law.

he American Heritage® College Writer's Dictionary by the Editors of the American Heritage® Dictionaries. Copyright © 2013 by Houghton Mifflin Harcourt Company.

Roget's II: The New Thesaurus, Third Edition by the Editors of the American Heritage® Dictionaries. Copyright © 2009 by Houghton Mifflin Company. Published by Houghton Mifflin Company. No part of this database may be reproduced or otherwise used without prior written permission from the publisher unless such use is expressly permitted by applicable law.

No investigation has been made of common-law trademark rights in any word. Words that are known to have current trademark registration are shown with an initial capital and are also identified as trademarks. The inclusion or exclusion of any word, or its capitalization in this dictionary is not, however, an expression of the Publisher's opinion as to whether or not it is subject to proprietary rights, nor is it to be regarded as affecting the validity of any trademark.

Concise Oxford English Dictionary 11th edition ISBN 0198608640 © Oxford University Press 2005.

ETI-Eloquence™ and RealSpeak™ Copyright Nuance Communications, Inc. All Rights Reserved.

Homophones and confusables word lists from WordSpring™ software. © 2002 Lexia Institute.

Acapela Text-to-Speech from Acapela Group.

OpenDyslexic font © OpenDyslexic.

MPEG Layer-3 audio coding technology licensed from Fraunhofer IIS and Thomson.

The Picture Communication Symbols samples © 1981-2004 Mayer-Johnson, Inc., Solata Beach, CA. USA. All rights reserved worldwide.

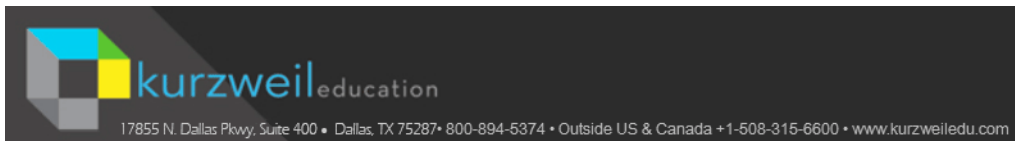
Widgit Picture Dictionary © Widgit Software

NIMAS Sample files created by the AIM and NIMAS Centers at CAST, Inc. with support from the Office of Special Education, US Department of Education.

Additional product components are licensed from ABBYY™; Bennet-Tec Information Systems, Inc.; Nuance Communications, Inc.; WASTE Text Engine © 1993-2002 Marco Piovanelli; and Vantage Technologies.

Note About Copyrighted Material:

If you upload or install source materials or any other materials on any computer, including, without limitation, your computer, a local area network, or a web-based computer hosted by Kurzweil Education, Inc., you hereby acknowledge that you have all of the necessary ownership or licensed rights to load such materials and shall fully indemnify Kurzweil Education, Inc. from any claims that may arise relating to such actions.



Contents

| | |
|--|-----------|
| Web License Overview, Set Up and Management | 1 |
| Kurzweil 3000 Web License Overview..... | 2 |
| Web License System Requirements..... | 5 |
| Installing Web License Client Software..... | 6 |
| Download the Software from Kurzweiledu.com | 6 |
| Installing the Acapela Voices | 8 |
| Installing Additional Acapela Voice Sets | 10 |
| Installing the OpenDyslexic Font | 11 |
| The Kurzweil 3000 Read the Web Extension | 15 |
| Working with User Accounts and License Allocation | 16 |
| Web Universal Library | 17 |
| The Web Universal Library Overview | 18 |
| Web Universal Library Structure | 18 |
| Using the Web Universal Library | 20 |
| Index | 25 |

1 Web License Overview, Set Up and Management

The information in this guide is arranged into the following main topics:

- [*Kurzweil 3000 Web License Overview*](#) on page 2.
- [*Web License System Requirements*](#) on page 5.
- [*Installing Web License Client Software*](#) on page 6.
- [*Installing the Acapela Voices*](#) on page 8.
- [*Installing Additional Acapela Voice Sets*](#) on page 10.
- [*Installing the OpenDyslexic Font*](#) on page 11.
- [*The Kurzweil 3000 Read the Web Extension*](#) on page 15.
- [*Working with User Accounts and License Allocation*](#) on page 16.

Kurzweil 3000 Web License Overview

Licenses for Using Kurzweil 3000 Over the Internet

The Kurzweil 3000 Web License product offers convenient, secure Kurzweil 3000 license check in/out through the Web.

Web licenses are stored and managed by Cambium Learning and delivered to users over the Internet.

In addition to placing less of a burden on a school's technology team, Web Licensing allows users to access licenses and run Kurzweil 3000 from any computer on which the Kurzweil 3000 Web License Client software is installed, and from anywhere on the Internet.

Web License Users

There are three types of users:

- Designated License Coordinator who is set up by Cambium Learning for the organization. This user has the ability to create and manage sub-users and to allot licenses to those sub-users, which can include Student users. When viewing user information, this user can see and change all of his/her sub-users' information. When viewing Universal Library contents, this user can access all of his/her sub-users' folders.
- Site coordinator who could be a teacher, principal, or other school authority. Set up by the organization's license coordinator, this user has the ability to create and manage sub-users, including Student users, and to allot licenses to those sub-users. When viewing user information, the site coordinator/teacher user can see and change all of his/her sub-users' information. When viewing Universal Library contents, this user can access all of his/her sub-users' folders.
- Student users are created and registered by any user who can create sub-users. They cannot, however, have sub-users, nor have access other users' folders in the Universal Library except Public ones created by their teachers or for the organization.

Complemented by Web-Based Universal Library

Included with the Kurzweil 3000 Web License Edition is the Web Universal Library, a robust file repository that provides leveled access to files and documents.

The Web Universal Library enables districts or schools to widely distribute curriculum, and share and reuse material. Any user can upload district-wide curriculum and resource files. Teachers are able to post classwork, and students can access those files and documents from anywhere on the Internet, from any Kurzweil 3000 Web Client computer, at any time.

The Web License Universal Library also includes the Classic Literature collection of nearly 2000 public domain electronic text, from literary classics, factbooks, and references to religious and historical documents.

Roaming Preferences

Once set, Kurzweil 3000 personal preferences, such as reading voice and reading speed, are maintained allowing you to work on Macintosh to Macintosh without having to reset options. (Kurzweil 3000 Macintosh settings are not valid in Kurzweil 3000 Windows systems and vice versa.)

How Does Web License Work?

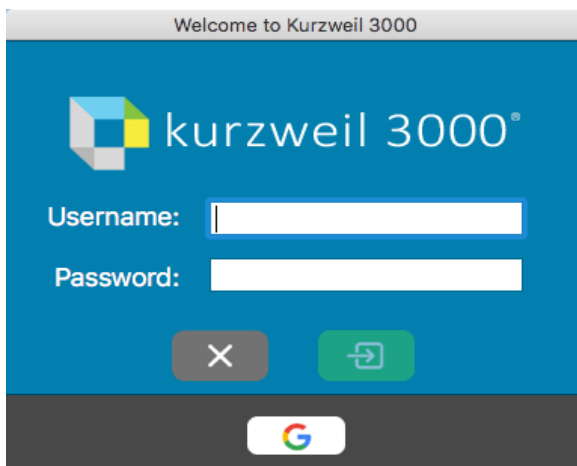
Once your organization completes the Web License product purchase process, an IT specialist installs the Web License Client Software, and an initial user account is set up by Cambium Learning Customer Service for a designated License Coordinator.

That initial user, who could be a school administrator, IT specialist, even a teacher, then creates sub-user accounts for sub-site coordinators at different schools, teachers and/or students. At the time of user setup, the system generates login information — a username and password — for each user.

Each user, other than Student users, can set up and manage sub-users under his/her account.

To access Kurzweil 3000, log in by selecting the Kurzweil 3000 desktop icon on a computer running Web License Client software. The Kurzweil 3000 login screen is displayed.

Log in by entering your username and password or select the Google button to log in with your Google classroom credentials if your school district allows it.



Web License System Requirements

- A Macintosh with a minimum of an Intel processor, and that is capable of running Mac OS X 10.10 to 10.15.
- Minimum 4 GB RAM.
- Minimum 1 GB of hard disk space.
- Keyboard, mouse, speakers, microphone.
- Internet connection required for Web License product use and some features (Google Translate, Online Book Search, Read the Web, etc.).
- Image Capture-compatible scanner

Some scanners might not be compatible with the operating system versions required by Kurzweil 3000; and some scanners might not work with Kurzweil 3000 because of TWAIN or Image Capture support, speed and/or quality issues.

For a list of compatible and recommended scanners call Kurzweil Technical Support: 800-894-5374 or **+1-508-315-6600** from outside of the United States.

To ensure that your system meets or exceeds the most recent requirements, refer to the Kurzweil website's system requirements page:

<https://www.kurzweiledu.com/includes/new-mac-system-requirements.html>

Installing Web License Client Software

There are two ways to install Kurzweil 3000: from the DVD or by downloading the application from the Kurzweil website.

Download the Software from Kurzweiledu.com

Before you download Kurzweil 3000 confirm that your Macintosh's security settings allow apps downloaded from the App store and identified developers:

1. Go to System Preferences → Security and Privacy → General.
2. Select the Radio button to allow apps downloaded from “App Store and identified developers.”
3. Download the application from the Kurzweil website:

<https://www.kurzweiledu.com/k3mac>

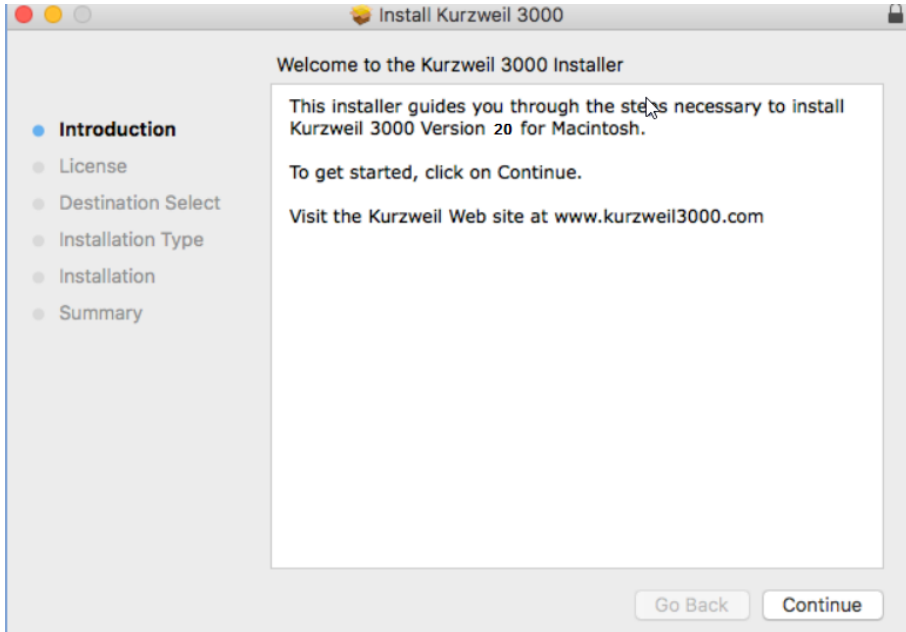
4. Select the Web License link.
5. A dialog pops up asking whether to open the file or save it.
6. Choose **Save** to save the file. This will take some time.

To install Web License client software:

1. Place the Kurzweil 3000 DVD into the DVD drive or locate the downloaded file.
2. From the DVD window or the location to where you saved the downloaded file, double click the .DMG file. A window is displayed containing the **Kurzweil 3000 installation package**, the **Acapela Voices installation package**, the **Readme** file, the **Documentation** folder, the **Extras** folder, and the **Sample Files** folder.



3. Double click the **Kurzweil 3000.pkg** icon. The *Install Kurzweil 3000 window* is displayed.



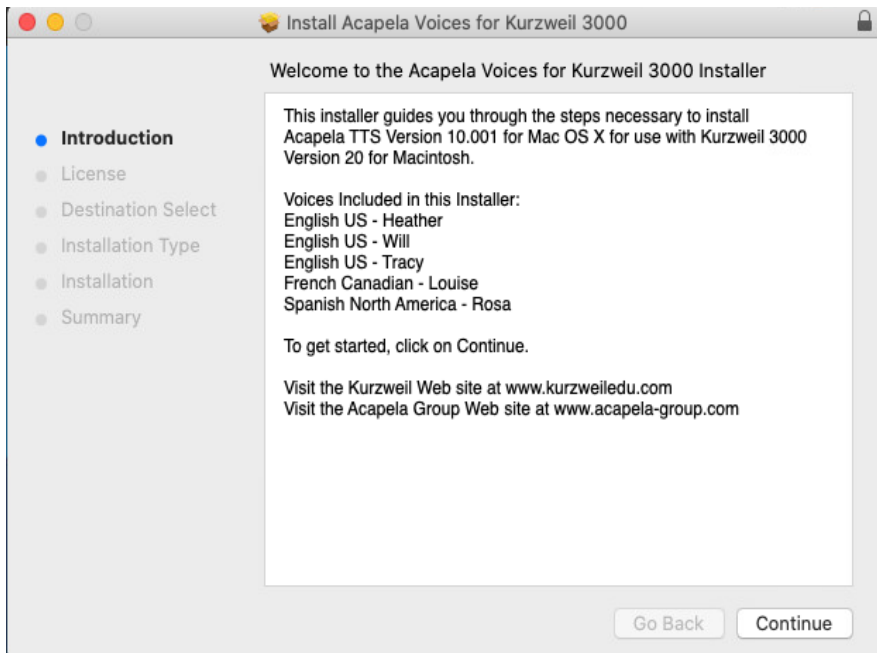
4. Click the **Continue** button in the Install Kurzweil 3000 window to start the installation wizard. Follow the instructions in the windows that display until the installation has completed.

Installing the Acapela Voices

The Kurzweil 3000 DVD contains voices from Acapela. We recommend that you install these voices on each Macintosh that will run Kurzweil 3000.

Installing the Voices

1. From the initial blue window that contains the installation packages, double-click the **InstallAcapelaVoices.pkg** file. The *Install Acapela Voices for Kurzweil 3000* window is displayed.



2. Click the **Continue** button to start the installation wizard. Follow the instructions in the windows that display until the installation has completed.

Installing Additional Acapela Voice Sets

The additional Acapela Voice sets include access to more than a dozen voices in a variety of languages. All but the Acapela European Voices Three* are available on both the DVD and the Kurzweil 3000 Website. Following are the additional voice sets and the voices contained in each set.

| Acapela English Non US Voices | Acapela European Voices One | Acapela European Voices Two |
|--------------------------------------|------------------------------------|------------------------------------|
| English Australian – Lisa | Dutch – Femke | German – Klaus |
| English Australian – Tyler | Dutch Belgian – Jeroen | German – Claudia |
| English Indian – Deepa | Dutch Belgian – Sofie | Portuguese – Celia |
| English UK – Lucy | French – Manon | Italian – Fabiana |
| English UK – Peter | French - Antoine | Italian – Vittorio |

| Acapela European Voices Three* | Acapela North and South American Voices |
|---------------------------------------|--|
| Swedish – Emma | English USA – Sharon |
| Swedish – Erik | English USA – Rod |
| Danish – Rasmus | English USA – Ryan |
| Norwegian – Kari | Spanish North America – Rodrigo |
| Finnish – Sanna | Portuguese Brazil – Marcia |

***Note:** The Acapela European Voices Three is available only on the Kurzweil 3000 website.

Downloading and Installing from the Kurzweil 3000 Website

Before you download from the Kurzweil 3000 website, confirm that your Macintosh's security settings allow apps downloaded from the App store and identified developers:

1. Go to System Preferences → Security and Privacy → General.
2. Select the Radio button to allow apps downloaded from “App Store and identified developers.”

Then download the Acapela voices.

1. Go to <https://www.kurzweiledu.com/k3mac>. Use the information shown in the tables above to determine the voice set to download.

2. When the download has completed, double-click the download file (**.dmg**) in the download window. A window is displayed that contains the installation file (**.pkg**) and a **readme.txt** file.
3. Double-click the installation file (**.pkg**). The Welcome screen is displayed.
4. Click **Continue** and follow the instructions to complete the installation.

Installing from the DVD

1. Open the voice set that you want to install (use the information listed above to determine the voice set you need)
2. Double click the installation file (acapela*.pkg) to start the installation
3. Follow the instructions to complete the installation

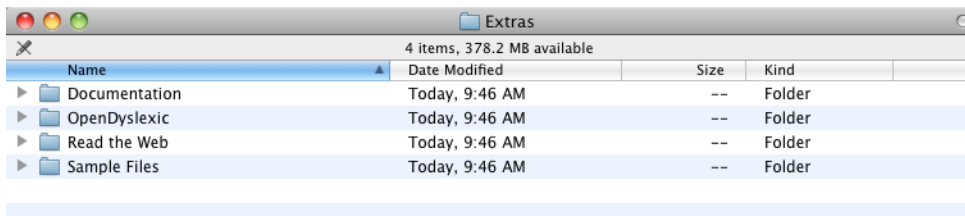
Installing the OpenDyslexic Font

The OpenDyslexic font helps to increase readability for readers with dyslexia. The typeface includes Regular, **Bold**, and *Italic* styles.

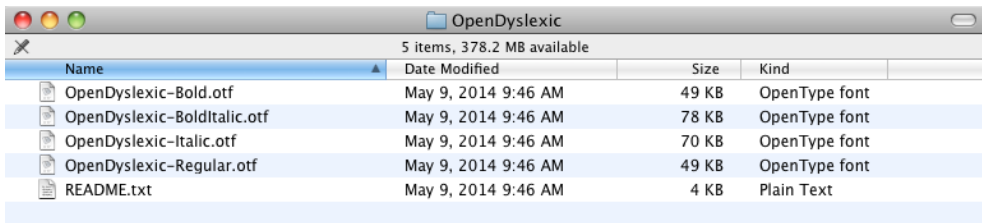
Kurzweil 3000 includes the OpenDyslexic fonts in the Extras folder.

Installing the Font

1. From the initial Blue installation window, open the **Extras** folder. .



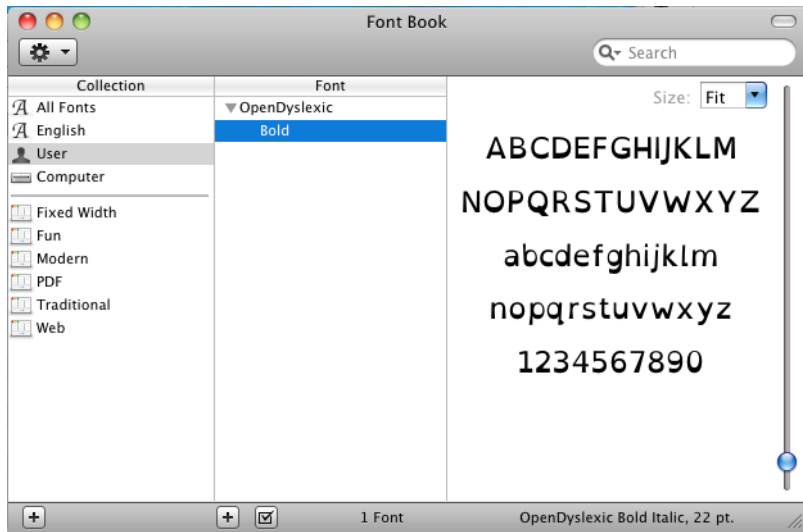
2. Double click the **OpenDyslexic** folder. The list of OpenDyslexic fonts is displayed.



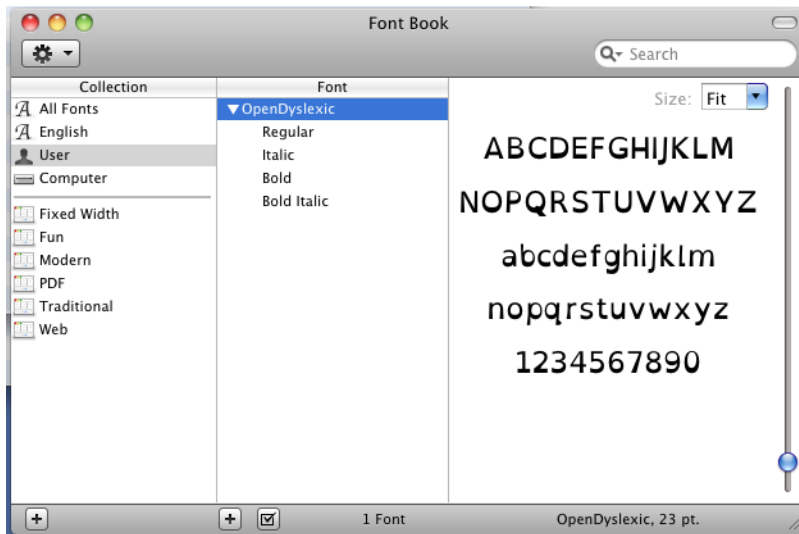
3. Double click the font to install, for example **OpenDyslexic-Bold.otf**. The font is displayed.



4. Click **Install Font**. When it has been installed, the Font book opens showing the installed font style.



5. With the Font Book open, you can drag the remaining fonts from the OpenDyslexic folder into the Font Book.



6. Close the Font Book.

The Kurzweil 3000 Read the Web Extension

The Kurzweil 3000 Read the Web extension enables the Kurzweil 3000 Read the Web application to work with Firefox and Chrome. This extension works with Kurzweil 3000 Web License Edition only.

Refer to the Kurzweil 3000 online help for instructions for Adding and using the Read the Web extension.

Working with User Accounts and License Allocation

After your organization purchases a number of Web Licenses, Cambium Learning Customer Service sets up the initial user (typically, this is a designated site coordinator who could be teacher, school administrator or IT specialist). He/she is given username and password for login.

The site coordinator/initial user can then set up the site users, providing them with their system-generated usernames and passwords. Once that is done, any user can log in, set up and manage sub-users under their directory.

Sub-users are typically teachers who set up their own sub-users, typically students. Student users, however, do not have User Management access.

For detailed information about Accessing the User Management System, Registering Users, Viewing and Managing Licenses, Managing Users, and more, refer to the Product Guide, "User and License Management":

<https://www.kurzweiledu.com/news-resources/product-guides.html>.

2 Web Universal Library

This chapter contains four main sections.

- *The Web Universal Library Overview* on page 18 has the following subsections:
- *Web Universal Library Structure* on page 18.
- *Using the Web Universal Library* on page 20 has the following subsections:
- *To open a document from the Library:* on page 20.
- *To save an open document to the Library:* on page 21.
- *To create a new folder in the Universal Library:* on page 22.
- *To rename a file or folder in the Universal Library:* on page 23.
- *To delete a file or directory in the Universal Library:* on page 23.
- *To cut or copy, and paste a file or folder in the Universal Library* on page 23.

The Web Universal Library Overview

Kurzweil 3000 Web License Edition includes the Web Universal Library. If your school uses the Kurzweil 3000 Local Area Network (LAN) Universal Library, you are already aware of the benefits of central file storage and sharing.

The Kurzweil 3000 Web Universal Library, however, is an expanded version of the LAN Universal Library. Because the Web Universal Library is Internet-based, it allows students and teachers, or any authorized users, using any computer running Web License Client software from anywhere on the World Wide Web, to access and share files.

For districts and schools, the Web Universal Library is ideal for placing standardized curriculum material and print resources in electronic form for all or for specific groups to access. Teachers can make class files available wherever, whenever students need them.

Included in each Web Universal Library are the following folders:

- Classic Literature, a collection of nearly 2000 books, historical documents selected from the public domain.
- Samples, files from Cambium Learning Group's published educational series, LANGUAGE! Live, Learning A-Z and Passport Reading Journeys.
- Nonfiction Bookbag with inspiring content for Grade Levels 3-8.
- Templates (Brainstorm for Higher Ed, K12 and Teachers).

Web Universal Library Structure

The structure of the Universal Library is based on user/sub-user file system concept where each authorized user can set up and manage his/her sub-users.

In addition to sub-user folders, each user also has a Public folder and a Private folder. All users have Read-Write permission to his/her own and to sub-users' Public and Private folders

Sub-users only have Read access to the Public folder of the user who created their account.

For example, a district could set up folders for each school. In a school's folder, there could be folders for teachers as well as a Public and a Private folder. All teachers and students in the school could access the school's Public folder. Teachers would not be able to access one another's folders.

Each teacher folder in turn would have the teacher's students' folders, plus a Public and Private folder. All students whose accounts a teacher creates would be able to access their teacher's Public folder. Students would not be able to access one another's folders.

Using the Web Universal Library

You can open and save to the Universal Library and manage folders and files by using either the Open from the Universal Library or Save to the Universal Library.

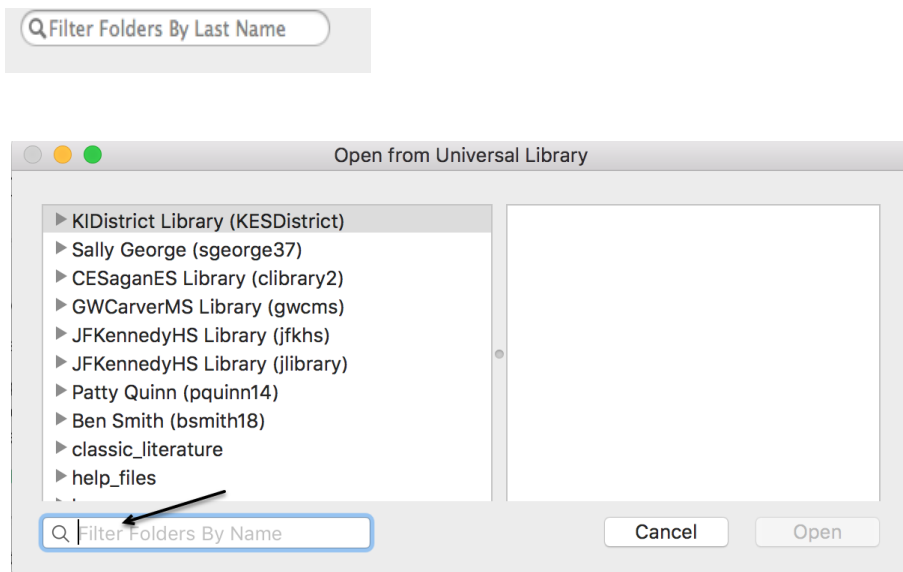
The Web Universal Library currently supports KES, TXT, DOC, DOCX, RTF, EPUB, BKS, PDF file formats.

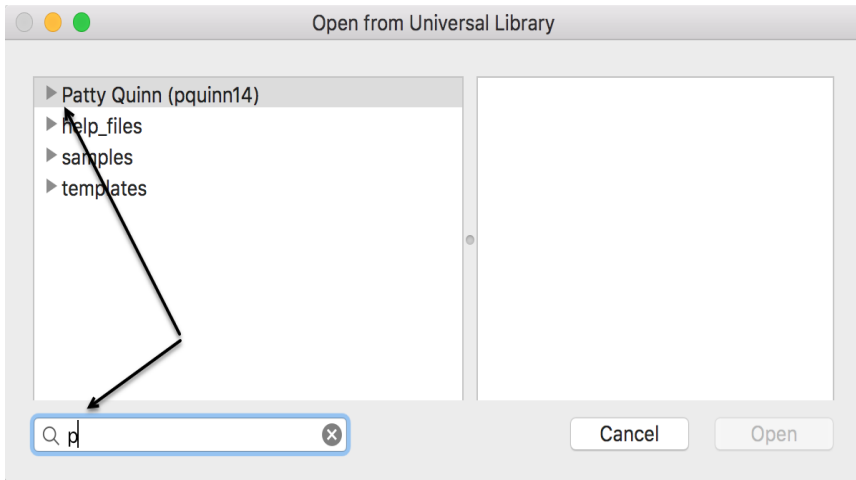
To open a document from the Library:

1. From the **File** menu, choose **Open from Library** to open the Universal Library.

If your list is long, you can use the **Filter by Name** field, in bottom left of the dialog to quickly find the folder you want to open. Start typing the name of the folder. You may only have to enter a few letters to narrow the search.

Note: if your site has 1000 or more users, you will see **Filter Folders by Last Name**.



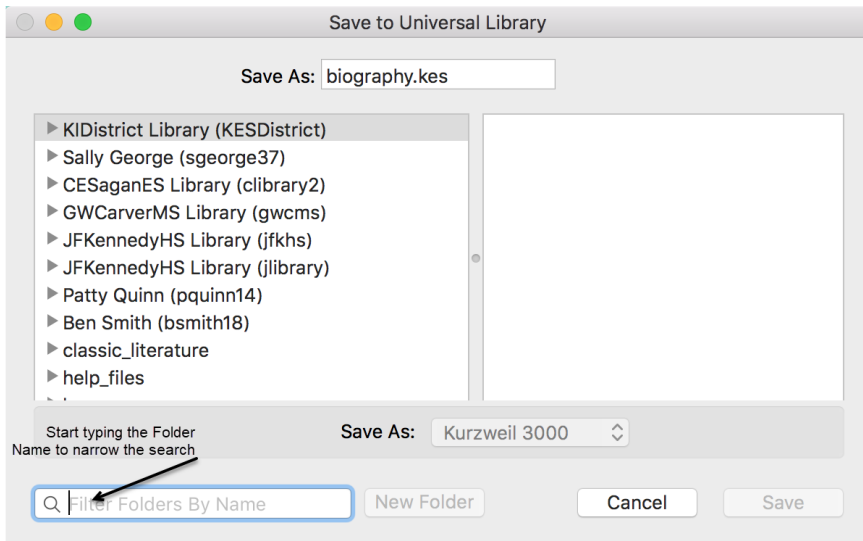


2. Select the desired folder, then click **Open**.
3. Select the file from the list displayed in the right pane of the Open from Universal Library.
4. Use the Kurzweil 3000 Reader to read the file.

To save an open document to the Library:

1. Open the document you want to save to the library.
2. From the **File** menu, choose **Save to Universal Library**.

Note: If your list of folders is long, to narrow your search you can use the **Filter Folders by Name** field (or **Filter Folders by Last Name** if your site has more than 1000 users).



3. In the dialog, specify where you want to place the file by clicking the desired folder in the left-hand pane.
4. Click **Save**.

Notes:

- When saving a file, you are uploading it to the Web server, and the time and speed by which a file is uploaded depend on the Internet line and service at your site. We recommend 50 pages or fewer per file, so it's a good idea to separate chapters and save a chapter at a time.
- You can only save to the directories for which you have access privileges.
- No user can save files to the Classic Literature folder.

To create a new folder in the Universal Library:

You can create a new folder in the following places:

- Under your own user directory, in the Private and Public folders.
- In the Public folders of directories belonging to sub-users whose accounts you created.

1. From the **File** menu, choose **Save to Universal Library**.
2. In the dialog, in the left-hand pane, select the directory under which you want to create the new folder.
3. Click the **New Folder** button.
4. Rename the folder.

To rename a file or folder in the Universal Library:

1. Select the file or folder.
2. Click again or press Return to begin editing.
3. Type the new name, then press Return.

To delete a file or directory in the Universal Library:

1. From the **File** menu, choose either **Open from** or **Save to Universal Library**.
2. In the dialog, do one of the following:
In the left-hand pane, select the directory you want to delete.
In the right-hand pane, select the file you want to delete.
3. Do one of the following:
Control-click and in the context menu, choose **Delete**.
Use the **Forward-Delete** or **Backward-Delete** shortcuts.

Notes:

- If you use the **Delete** command in the Save to Universal Library dialog, you have to click **Save** to close the dialog when you are done.
- You can only delete from the directories for which you have access privileges.
- No user can delete files from the Classic Literature folder.

To cut or copy, and paste a file or folder in the Universal Library

1. From the **File** menu, choose **Open from Universal Library**.

2. In the dialog, do the following:

In the left-hand pane, navigate to and select the folder you want to cut or copy, or the folder that contains the file you want to cut or copy. You can only cut or copy folders that are inside your public or private folder.

In the right-hand pane, select the file you want to cut or copy.

3. Control-click to show the context menu, choose **Cut** or **Copy**.

4. Do one of the following:

To paste a file into another folder in the Universal Library, navigate to the desired folder in the left-hand pane, click in the right-hand pane, control-click to show the context menu, and then choose **Paste**.

To paste a folder into another folder in the Universal Library, navigate to the desired folder in the left-hand pane, control-click to show the context menu, and then choose **Paste**.

To paste a file or folder elsewhere on your desktop or system, navigate to that location, control-click to show the context menu, and then choose **Paste**.

Notes:

- Note that you can only paste if you have **Copy To** privileges.
- It is possible to Copy-Paste files and folders from the Universal Library to the Finder, and files (not folders) from the Finder to the Universal Library.
- No user can cut files from or paste files into the Classic Literature folder.

Index

A

- Acapela Voice sets
 - additional 10
- Acapela Voices
 - installing 9

D

- Designated License Coordinator 2
- Dyslexia
 - OpenDyslexic font for 11

F

- Filter by Name field 20
- Font
 - OpenDyslexic 11

G

- Google button on login screen 4

I

- Installing
 - Acapela Voices 8
 - OpenDyslexic font 11
 - Web License Client software 6
- installing
 - Acapela Voices 9
 - additional Acapela Voice sets 10

K

- Kurzweil 3000
 - Installing 6
 - using over the Internet 2

L

- License Coordinator 4

O

- OpenDyslexic font 11

P

- Personal preferences 3

R

- Read the Web Extension 15

S

- saving
 - a document to Web Universal Library 21
- scanner
 - compatibility with Kurzweil 3000 5
- Site coordinator 2
- Student users 2
- Sub-site coordinators 4
- Sub-user accounts 4
- System requirements 5

U

- Users
 - types of 2

W

- Web License
 - how it works 4
- Web License Client software
 - installing 6
- Web Universal Library 3
 - overview 18
 - saving a document to 21
 - structure 18

